



LOVE MY SKIN



LUXURY CERAMIC DIFFUSER

LMSD1-P

## Table of Contents

2. Introduction
3. How to Use
4. Cleaning & Maintenance
5. Product Specifications
6. Troubleshooting
7. Warnings
9. Support

## Introduction

Congratulations on the purchase of your new Love My Skin Luxury Ceramic Diffuser, combining chic home decor with your skincare routine.

Diffusing essential oils to offer a spa-like atmosphere in the comfort of your own home, for an effective and relaxing treatment to bring wellness to your skin, body and mind.

### Pack includes:

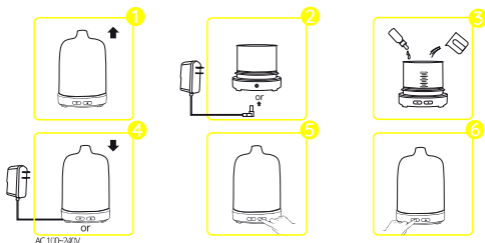
- Love My Skin Luxury Ceramic Diffuser
- USB cable
- Instruction Manual




### Features:

- Near silent operation
- Quick start
- Colour changing LED
- Fine mist
- USB-powered (plug adapter not included)

### 12-month warranty available

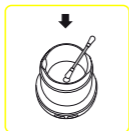
## How to Use



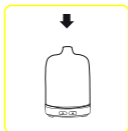
1. Place the diffuser correctly on a flat surface, remove the ceramic cover and the in-cover from the main body.
2. Fill water tank with water, no higher than the maximum level line (100ml).
3. Add 2-3 drops of essential oils into the water tank. Essential oil can be more or less according to personal preference.
4. Replace the in-cover and the ceramic cover to the original position of the main unit. Plug the AC adapter into the power socket.
5. Press  button to turn on the device and set as follows:  
Press  button first time to turn on and start the mist continuously.  
Press for the second time to turn off and stop mist  
Press for the  button to turn on the LED illumination and set LED mode.
6. The diffuser comes with different LED lights to provide the ambiance that suits you.  
When the diffuser detects water is below the minimum threshold, the device will automatically enter standby mode; to re-activate, repeat steps 1-6.

## Cleaning & Maintenance

1. Unplug the device and pour out the remaining water.
2. Use a soft cloth with water to clean the main body and outer shell lightly.
3. After cleaning, place in a ventilated area to dry.
4. Disinfect with a cotton swab dipped in alcohol and clean the dirt of the ultrasonic plate gently. (picture A).
5. Replace the cover of the diffuser (picture B)
6. Store in a cool dry place.



Picture A



Picture B

### NOTE:

1. Do not use acid or alkaline or other strong cleaning agents on the unit. May cause damage or discolouration.
2. Change water daily. Do not use mineral water or water with a temperature above 40°C.

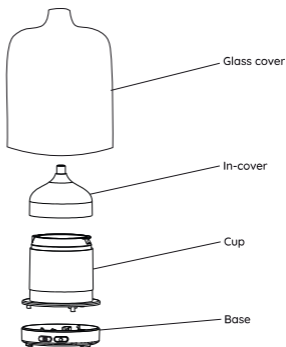
## Product Specifications

**Product Name:** Love My Skin Luxury Ceramic Diffuser

**Material:** Ceramic

**Product Code:** LMSD1-P

Applicable area	15m <sup>2</sup> - 20m <sup>2</sup>	Material	PP+ABS+PC+Silicon
Working temperature	15-40°C	Dimension	Ø95x150mm
Input voltage	100 volts-240 volts AC	Ultrasonic rate	3.0MHz
Rated voltage	DC 5V	Accessories	<input type="checkbox"/> AC power adapter
Power consumption	Max 7.5 W		<input type="checkbox"/> User Manual
Tank Capacity	100ML	Quantity	X1
Misting output	≥15ml/hr	Weight	144g-169g
Packaging size	Max: 285x205x178mm Min 247x172x170mm	Gross	Max: 1172.1g Min: 647.8g



## Troubleshooting

Problem	Possible Cause	Solution
The device does not work.	Water below minimum threshold.	Refill as per the instructions.
	Power cables disconnected or damaged.	Check connection to the diffuser. Check connection to the USB plug adapter. Check there is no damage to the cable - replace if necessary (contact customer services).
Water is over the max fill line.	Too much water has been added.	Remove excess water to below the max line.
Issue of water smell when product not in use.	The diffuser has not been cleaned regularly.	Clean the diffuser as per instructions.
Little or no mist is being produced.	The diffuser has not been cleaned regularly.	Clean the diffuser as per instructions.
The ceramic cover and inner cover do not fit properly.	The covers have been incorrectly installed.	Remove both covers and reinstall, taking care to place them in the correct position.
Water is leaking from the diffuser.	Covers could be misaligned or tank overfill.	Remove then replace both covers ensuring they are not misaligned.
		If tank is overfilled, then disconnect from power and remove some of the water.
Note: If the device still does not work properly after using the above solutions, please stop using the device and contact your local retailer.		



## WARNINGS

- KEEP OUT OF REACH OF CHILDREN
- Do not move when it is filled with water.
- Do not exceed the maximum water level line.
- Place unit on stable, level surface. Do not block steam outlet.
- Unplug power supply during maintenance. Do not use if cord is damaged. Do not pull forcefully on cord and keep clear of pathways.
- Clean the water tank weekly.
- Avoid contact with the face, eyes, body and hair.
- This device is not intended for the use of children. Anyone planning to use this product must read the instructions thoroughly before use.
- Before adding water and cleaning, disconnect the power first.

## IMPORTANT SAFETY INSTRUCTIONS

- Read all instructions before use.
- Save these instructions for future reference.
- If anything goes wrong with this device, do not repair it yourself. Contact a qualified service agent to carry out any repairs or maintenance or contact the store where you purchased the product.
- The product should only be used for its intended purpose as described in the instruction manual.
- Do not use any attachments not recommended by the manufacturer.
- Remove all packaging materials and examine the product for any damage, if damage is found; notify the retail store where it was purchased.
- Do not use the product if it does not work properly, or if it has been dropped or damaged in any way.



## SUPPORT

Please feel free to contact us at:



+44 (0) 1483 937 967



hello@love-my-skin.co.uk



Love My Skin (Kinetik Medical Devices)  
Unit 3, Perrywood Business Park  
Honeycrook Lane,  
Salfords, Redhill.  
RH1 5DZ  
UK.



# LOVE MY SKIN



Symbol for “Manufacture Date”



Symbol for “Environment Protection” - Waste electrical products should not be disposed of with household waste. Please recycle where facilities exist. Check with your local authority or retailer for recycling advice.



Symbol for “Complies with EU requirements”.



Symbol for “Complies with UK requirements”.



Follow this instruction manual for your safety.



Model Reference.

Made in China

**LMSD1-P1**