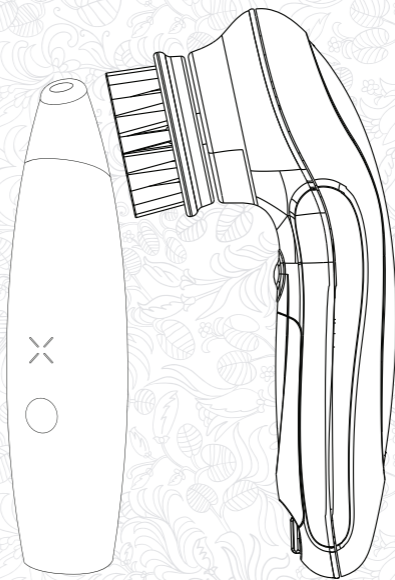




LOVE MY SKIN

INSTRUCTION MANUAL



THE POWER COUPLE
BEAUTY FACIAL CLEANSING BRUSH
AND BLACKHEAD REMOVER

LMSPC

The pore-fect match. The Love My Skin Power Couple features our Beauty Facial Cleansing Brush and Blackhead Remover for clean, glowing skin. Wash away the day with our Facial Cleansing Brush. Apply your preferred cleanser to the interchangeable heads. Switch up between the rotary brush head with its super soft bristles to the noduled silicone head, suitable for more sensitive skin. The facial cleanser vibrates using multiple speed settings to deeply clean and exfoliate your face.

An easy to use treatment, the Electric Blackhead Remover uses suction technology, to gently remove stratum corneum to make the skin smoother and more radiant. It gently pushes out the rough surface and debris to help exfoliate dead skin, remove excess oil, reduce blemishes, smooth fine lines, unclog pores, and remove blackheads & whiteheads with 4 different head attachments to choose from.

Please read this instruction manual before use.

PRODUCT SPECIFICATION

Name: The Power Couple
Item No: LMSPC

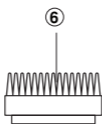
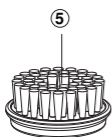
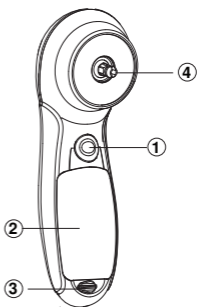


1. Facial Cleansing Device
2. Facial Cleansing Brush Heads x 2
3. Blackhead Remover Device
4. Blackhead Remover Heads x 4
5. Sponge x 5 + Silicone Ring x 2
6. Blackhead Remover Charging Cable x 1
7. User Guide

PRODUCT DETAIL

Beauty Facial Cleansing Brush

- ① Power Button
- ② Battery Cover
- ③ Battery Lock
- ④ Brush Connection Pin
- ⑤ Brush Head
- ⑥ Extra Silicone Brush Head



PRODUCT DETAIL

Blackhead Remover

- ① Power Button
- ② USB Charging Port
- ③ Suction Indicator
- ④ Replaceable Head (shown below)



MICROCRYSTALLINE SKIN HEAD



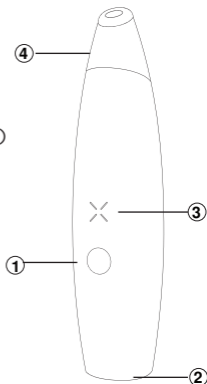
BLACKHEAD REMOVAL & SKIN FIRMING HEAD



CLEAN PORES HEAD



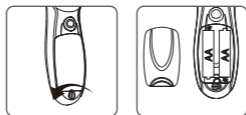
REDUCE FINE LINE HEAD



PRODUCT CONFIGURATION

Beauty Facial Cleansing Brush

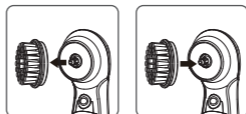
※ Turn the Battery Lock and remove the Battery Cover. Install 2AA batteries according to the battery compartment instructions (picture 2) (batteries are not included).



Picture 2

Brush Head Replacement

To remove the Brush Head, hold it with your hand and pull it from the appliance body. To install it, align the Brush Head with the Brush Connection Pin and lock the position with a “click” (picture 3).



Picture 3

PRODUCT CONFIGURATION

Blackhead Remover

SUCTION DISPLAY

Display status:
Mode 1



Display status:
Mode 2



Display status:
Mode 3



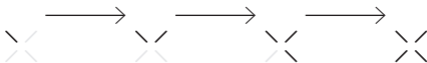
Display status:
Mode 4



POWER DISPLAY

When the battery is low, all the symbols flash together.

0.2 SECOND INTERVAL



When charging, the symbol is displayed in a clockwise rotation cycle.
When the charging is completed, the symbol is always on.

HOW TO USE

- 1) Install the brush head as guided and wet the face with water.
- 2) Apply cleansing gel/cream to the palm of one hand, with the other hand hold the device and rub the brush head on the cleansing gel/cream to form a foam.
- 3) Apply the foam on the face. Quick press the power button to turn on the device and the low-speed gentle cleansing mode, press the power button again to change to high speed deep cleansing mode. After you choose the appropriate mode, wet the brush head with water, place it on your skin and gently move it in circular motion from the inside to the sides of the face.

Recommended cleaning area, order and using time:

T-zone 20 secs → neck 30 secs. (picture 4).
Forehead 20 secs → left and right cheeks 20-30 secs →



Picture 4

- 4) Do not use the device when the brush head is dry as it may irritate the skin.
- 5) After using the device, turn it off, rinse your face with water and apply moisturizing lotion.
- 6) Clean the device body and brush head.

FACIAL MICRODERMABRASION AND FIRING SKIN FUNCTION:

1. Make sure you have a clean and dry face. Choose which sized beauty head you want to use and attach to the device.
2. Starting from the jaw, move the beauty instrument from the bottom up. Place the device on the cheek and move from the inside out.
3. Place the device on the forehead and move from the middle to the sides then place the Blackhead Remover in the T zone and move from the bottom to the top of the face.

HOW TO REMOVE BLACKHEADS

1. Replace with a large round hole or a small round hole beauty head.
2. Use the device on the blackheads and acne. Move the device around your face as needed. .

Technique: When you suck the blackheads move the device around slowly around the targeted area but please don't move back and fourth.

REDUCE FINE LINES

1. Insert the oval hole beauty head.
2. Place it in the corners of the eyes, nose, mouth, etc. for care, adjust the machine position as needed.

WHERE TO USE THE 4 SUCTION HEADS

MICROCRYSTALLINE HEAD:

Exfoliating effect for rejuvenating skin

PORE PERFECTION HEAD:

Delicate blackhead removal for sensitive skin



BLACKHEAD REMOVAL HEAD:

Large round head for strong suction

SPECIAL POINTED HEAD:

Designed for Microliftin massage suction for the corners of the nose and mouth.



Technique: You can use it to suck the skin parts that need to be treated, and then quickly pull it out, and repeat this operation many times. This operation can act on the bottom layer of the skin to stimulate microcirculation, promote blood circulation and increase skin elasticity and prevent wrinkles.

Dry skin is recommended to be used once a week. Oily mixed skin can be used twice a week for less than 5 minutes each time, but it is also depending on the skin condition.

WARNING

Make sure the filter sponge is properly inserted into the filter cup before handling and make sure the sponge is dry. Make sure water or other liquid will not be sucked into the air pump of the body, causing blockage, the device will not work properly.

PRODUCT CLEANING & MAINTENANCE

- 1) Make sure the device is turned off before you start cleaning it.
- 2) Do not immerse the device in water. The head/nozzle can be cleaned separately.
- 3) Wipe over the surface of the device with a damp cloth (the device should not be immersed in water) and dry it with a dry cloth.
- 4) Do not use any lubricant, detergent, polishing agents or air freshener on this device.
- 5) When cleaning the head/nozzle, do not immerse it in hot water above 40°C to avoid damage.
- 6) After washing the head/nozzle, place it in a ventilated place to dry (do not dry it in a place with direct sun light).
- 7) It is recommended to replace the Brush Head every 3 months.

⚠ WARNINGS

1. Please ensure your hands are dry before use and do not let water come into contact with the device as it could damage it.
2. Do not use the device under the following conditions:
 - Pregnant women.
 - Not intended for use by persons that lack experience or knowledge.
 - If you have any medical or health conditions.
 - If the area of use has wounds, scars, inflammation, lumps or other skin diseases and conditions.
 - Not suitable for cosmetic surgery, rhinoplasty and other parts of the skin.
 - Not suitable for use on sensitive skin or for people with allergies.
 - Avoid areas such as eyelids and throat.
3. Check the device before you start using it. Do not use this device if it has any damage.
4. Please stop using this device if you feel any discomfort.
5. Do not attempt to modify, disassemble, or repair the device by yourself to avoid accidents.
6. Do not press the Blackhead Remover nozzle hard against your skin, the device has strong suction.
7. After use, the skin may have some irritation or redness due to the accelerated microcirculation of the skin. This is normal and should disappear after around 30 minutes.
8. We recommend applying moisturiser after use and protecting the skin with sunscreen.
9. Do not use scrubs or other exfoliating products before and after treatment.
10. Regularly clean the device to extend its lifetime.
11. If you do not use the battery-operated device for a long time, remove the batteries.
12. Batteries contain substances harmful to our environment.
13. Do not place the device in a hot or humid environment for a long time.
14. Please do not dispose of the device with the batteries inside, remove the batteries and recycle it for environmental protection.
15. KEEP OUT OF REACH OF CHILDREN.

Trouble Shooting

Problem	Possible Cause	Solution
The device does not work	Batteries are running low (Cleanser)	Replace the batteries as guided
	Batteries are inserted incorrectly (Cleanser)	
	Power is running low (Blackhead Remover)	Recharge device as guided
Abnormal Noise	The attachment was installed incorrectly	Please turn off the device, and install the attachment correctly as guided
Other problems		Contact your local retailer
Note: If the device still does not work properly after using above solutions, please stop using the device and contact your local retailer.		

Please feel free to contact us at:



+44 (0) 1483 937967



hello@love-my-skin.co.uk



Love My Skin (Kinetik Medical Devices)
Unit 3, Perrywood Business Park
Honeycrook Lane, Salfords Redhill
RH1 5DZ. UK



LOVE MY SKIN



Symbol for "Manufacture Date".



Symbol for "Environment Protection" – Waste electrical products should not be disposed of with household waste. Please recycle where facilities exist. Check with your local Authority or retailer for recycling advice.



Symbol for "Complies with EU requirements".



Symbol for "Complies with UK requirements".



Follow this instruction manual for your safety.



Model Reference.