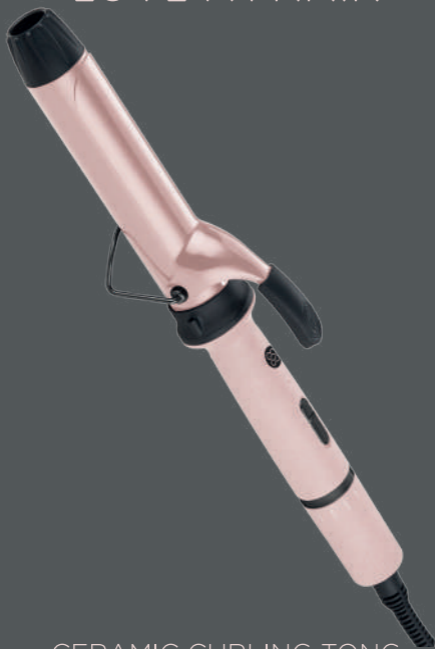




LOVE MY HAIR



CERAMIC CURLING TONG

for those bouncy curls

LMSCT-P

Contents

2. Introduction
3. Product Specification
4. Operating Instructions
5. Styling Guide
6. Maintenance & Troubleshooting
7. Warnings
10. Support

Introduction

Effortlessly create bouncy curls at home with the Love My Hair, Ceramic Curling Tong.

The 32mm ceramic coated barrel heats to a temperature of 180°C while the tong design grips the hair for quick and easy styling, making it suitable for use on a variety of hair types.

Box Includes:

- Ceramic Curling Tong, corded with fixed UK plug
- Instruction manual

Features:

- 32mm ceramic coated barrel
- 180°C temperature
- Cool touch tip
- Safety stand
- Corded with UK plug

12-month warranty available

Product Specifications

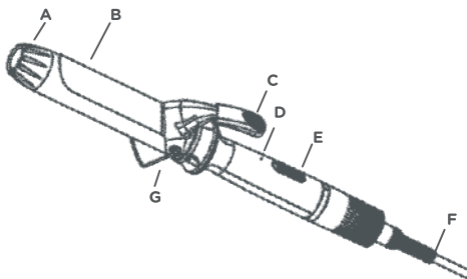
Product Name: Ceramic Curling Tong

Material: Ceramic barrel & ABS handle

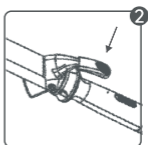
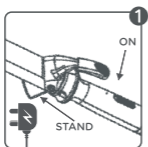
Product Code: LMSCT-P

Voltage: 110-240V-50-60Hz 45W - Class II

- A: Cool touch tip
- B: 32mm ceramic barrel
- C: Tong clamp
- D: Power indicator
- E: Power switch
- F: Power cord
- G: Stand



Operating Instructions



- Pull out the stand rest and plug the curling tong in at the wall, switching on the power and moving the product to the ON position.
- Whilst your styler is heating, never leave unattended.
- Always do a test curl before using the tong to ensure the correct setting for your hair type.
- Ensure your hair is dry and combed through.
- Take care to avoid contact between hot surface of the barrel and skin of the ear, face and neck.
- When finished styling, ensure power switch is located to OFF.

Styling Guide

- Wash, dry and brush your hair thoroughly before curling. Consider applying a heat protector spray from roots to tips.
- Separate the hair into sections. For tighter curls, sections should be 1-2 inches thick, for looser curls sections should be 2-3 inches. Clip back sections of hair from the section you are currently curling.



- Wrap your hair around the barrel being careful not to overlap any of the hair.
- For natural looking curls, alternate sections between clockwise and anti-clockwise.

- For extra hold, pin the curl to your head using pins. Continue until all sections are curled and pinned.
- When completed, take out pins and shake down your head.



- Spritz your hair with a small amount of hairspray.

Care & Maintenance

- This product is intended for household use. Unplug product before cleaning. The product must be cleaned only when cool.
- Use a soft non-abrasive cloth that is slightly dampened with water to wipe styling barrel surface.
- Do not allow water or any other liquid to get into the handle of the tong.
- Any other servicing should be performed by a qualified service centre.
- The product should not be stored while hot or plugged in. When not in use, allow curling iron to cool, then simply put back in the box and store out of reach of children in safe, dry location.
- Never wrap the cord around the curling iron. This could cause the cord to wear prematurely and break.

Troubleshooting

Problem	Possible Cause	Solution
The device does not work.	Power cables disconnected or damaged.	Please contact customer services.

Note: If the device still does not work properly after using the above solutions, please stop using the device and contact your local retailer.



WARNINGS

KEEP OUT OF REACH OF CHILDREN

- This device is not intended for use by persons (including children) with reduced physical, sensory or mental capabilities, or lack of experience and knowledge, unless they have been given supervision or instruction concerning use of the product by a person responsible for their safety.
- The tong will get very hot within a few seconds and should not be placed in contact with the skin after the curling tong is turned ON.
- Always do a test curl before using the tong to insure the proper setting for your hair type.
- Take care to avoid contact between the hot surface of the barrel and the skin of the face and neck.
- Do not place the hot curling tong on any heat sensitive surface until cool before storing away.
- Do not leave the tong unattended when plugged in.
- Do not use if the cord is damaged. In the event of damage discontinues use immediately. This curling iron is equipped with a swivel cord which must, when damaged, be replaced by a swivel cord of the same type; Return the product to your retailer.



WARNINGS

DANGER: Risk of electrocution

- Do not use this product near bath tubs, showers, basins or any other vessels containing water.
- Always unplug this product immediately after use.
- Do not use while bathing.
- Do not place or store this product where it can fall or be pulled into a bath or sink.
- Do not place or drop into water or other liquid.
- Do not reach for an electrical product that has fallen into water. Unplug immediately.
- Always ensure the voltage to be used corresponds to the voltage on the unit.
- In order to avoid risk, it must be repaired or replaced by the manufacturer maintenance department or the professional staff from the similar department if the power cord is damaged.

IMPORTANT SAFETY INSTRUCTIONS

- Read all instructions before use.
- Save these instructions for future reference.
- If anything goes wrong with this device, do not repair it yourself. Contact a qualified service agent to carry out any repairs or maintenance or contact the store where you purchased the product.
- The product should only be used for its intended purpose as described in the instruction manual. Not for commercial use.
- Do not use any attachments not recommended by the manufacturer.
- Remove all packaging materials and examine the product for any damage, if damage is found; notify the retail store where it was purchased.
- Do not use the product if it does not work properly, or if it has been dropped or damaged in any way.

SUPPORT

Please feel free to contact us at:



+44 (0) 1483 937 967



www.love-my-hair.co.uk



Love My Hair
(Kinetik Medical Devices Ltd)
Unit 11
Perrywood Business Park
Honeycrook Lane
Salfords
RH1 5JQ



LOVE MY HAIR



Symbol for “Manufacture Date”



Symbol for “Environment Protection” - Waste electrical products should not be disposed of with household waste. Please recycle where facilities exist. Check with your local authority or retailer for recycling advice.



Symbol for “Complies with EU requirements”.



Symbol for “Complies with UK requirements”.



Follow this instruction manual for your safety.



Model Reference.



Symbol for “No use in bathroom”.



CLASS II

CLASS II

Made in China

LMSCT-P