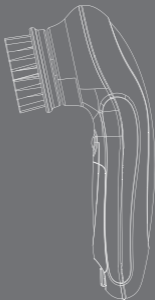


SKYN CARE.co



FACIAL CLEANSER

LMSFC2

LMSFC2-SG

LMSFC2-SCP

INSTRUCTION MANUAL

Safety Instructions:

To ensure proper operation of this appliance, please read this instruction manual carefully before using the appliance and save it for further reference.

WARNING

- This appliance must not be used on the following:
 - Children
 - People with sensitive skin
 - People with skin conditions or allergies
 - Areas such as eyelids or throat
 - Areas where epilation or plastic surgery has been performed
- Immediately stop using the appliance, and consult a doctor if you feel unwell.
- Do not place the appliance in a hot or humid environment for a long time.
- Do not attempt to modify, disassemble, or repair the appliance by yourself.

CAUTION

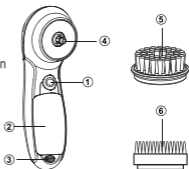
- If the appliance is not used for a long time, remove the batteries to prevent a possible leakage.

Specifications:

- Name: Facial Cleanser
- Item NO.: LMSFC2
- Rated Voltage/Power: 3.0V \equiv /1.1W
- Type of Battery: AA 1.5V x 2 (not included)
- Size: 165mm x 57mm x 71mm
- Material: ABS, PBT, Silicone
- Executive Standard: Q/XMMJ1001-2015

Product Description (Picture 1):

- ① Power Button
- ② Battery Cover
- ③ Battery Lock
- ④ Brush Connection Pin
- ⑤ Brush Head
- ⑥ Extra Silicone Brush Head



Picture 1

Operating Instructions:

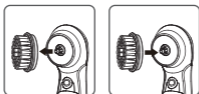
※ Turn the Battery Lock and remove the Battery Cover. Install 2AA batteries according to the battery compartment instructions (picture 2) (batteries are not included).



Picture 2

Brush Head Replacement

To remove the Brush Head, hold it with your hand and pull it from the appliance body. To install it, align the Brush Head with the Brush Connection Pin and lock the position with a "click" (picture 3).



Picture 3

Using the Appliance

- 1) Install the Brush Head as guided and wet the face with water.
- 2) Apply cleansing gel/cream to the palm of one hand, with the other hand hold the appliance and rub the Brush Head on the cleansing gel/cream to form a foam.
- 3) Apply the foam on the face. Short press the Power Button to turn on the appliance and the low-speed gentle cleansing mode, press the Power Button again to change to high speed deep cleansing mode. After you choose the appropriate mode, wet the Brush Head with water, place it on your skin and gently move it in circular motion from the inside to the sides of the face. Recommended cleaning area, order and using time: forehead 20 secs → left and right cheeks 20-30 secs → T-zone 20 secs → neck 30 secs (picture 4).



Picture 4

- 4) Do not use the appliance when the Brush Head is dry as it may irritate the skin.
- 5) After using the appliance, turn it off, rinse your face with water and apply moisturizing lotion.
- 6) Clean the appliance body and Brush Head.

Cleaning & Maintenance:

- 1) Make sure the appliance is turned off before you start cleaning it.
- 2) Do not immerse the appliance in water. The Brush Head can be cleaned separately.
- 3) Wash the surface of the appliance with water (the appliance should not be immersed) and dry it with a dry cloth.
- 4) Do not use any lubricant, detergent, polishing agents or air freshener on this appliance.
- 5) When cleaning the Brush Head, do not immerse it in hot water above 40°C to avoid Brush Head deformation.
- 6) After washing the Brush Head, place it in a ventilated place to dry (do not dry it in a place with direct sun light).
- 7) It is recommended to replace the Brush Head every 3 months.

Service

1. Eco-Friendly Tips

Batteries contain substances harmful to our environment. Please do not dispose of the appliance with the batteries inside, remove the batteries and recycle it for environmental protection.

2. Trouble Shooting

Problem	Possible Cause	Solution
The appliance does not work	Batteries are running low	Replace the batteries as guided
	Batteries are out of power	
	Batteries were installed incorrectly	Install the batteries as guided
Abnormal Noise	The Brush Head was installed incorrectly	Please turn off the appliance, and install the Brush Head correctly as guided
Other problems		Contact your local retailer
Note: If the appliance still does not work properly after using above solutions, please stop using the appliance and contact your local retailer.		



Symbol for "Manufacture Date".



Symbol for "Environment Protection" – Waste electrical products should not be disposed of with household waste. Please recycle where facilities exist. Check with your local Authority or retailer for recycling advice.



Symbol for "Complies with EU requirements".



Model Reference.